

BEOLAB 90

Vision of Sound



THE INTELLIGENT LOUDSPEAKER

BeoLab 90 contains a multitude of technologies. It's a perfect mix of world-class design and acoustics in, what may well be, the most complete and powerful digital loudspeaker designed for use in your home. This highly intelligent loudspeaker provides you with clarity, range and a sound staging that is second-to-none. BeoLab 90 features an impressive 360-degree design, has a variety of settings, and regardless of its placement, the room or your listening position it will give you mind-blowing sound.

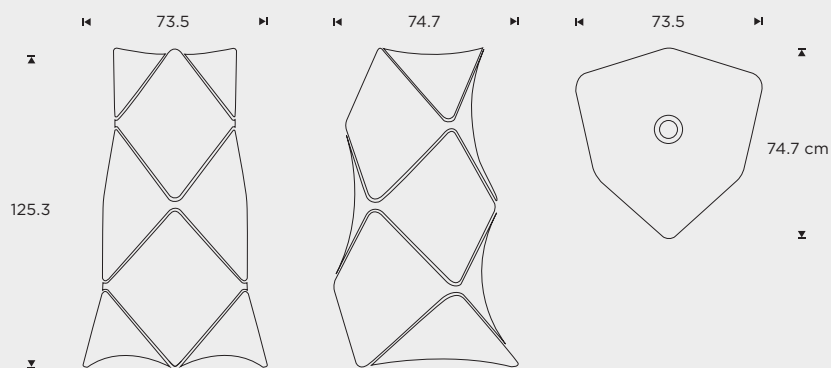


BANG & OLUFSEN

MEASUREMENTS

in cm

bang-olufsen.com/beolab90



SPECIFICATIONS

Designer

Frackenhohl Poulheim

Weight

137 kg

Wireless Input (Master and Slave speaker)

Wireless Power Link (24 bit / 48 kHz)
WISA (24 bit / 96 kHz)

Analogue Input (Master speaker)

Power Link
RCA
XLR (fully balanced)

Digital Input (Master speaker)

USB Audio (24 bit / 192 kHz)
S/P-DIF (24 bit / 192 kHz)
Toslink (24 bit / 96 kHz)

Digital Input (Master and Slave speaker)

Digital Power Link (24 bit / 192 kHz)

Amplifiers - custom designed for BeoLab 90

For tweeters

7 x Bang & Olufsen ICEpower AM300-X

For midranges

7 x Bang & Olufsen ICEpower AM300-X

For woofers

3 x Heliox AM1000-1

For front woofer

1 x Heliox AM1000-1

Speaker Drivers

Tweeter

7 x Scan-Speak Illuminator 30 mm

Midrange

7 x Scan-Speak Illuminator 86 mm

Woofer

3 x Scan-Speak Discovery 212 mm

Front Woofer

1 x Scan-Speak Revelator 260 mm

Digital Signal Processor

DSP type

2 x Analogic Devices ADSP-21489 - 450 MHz

Sampling rate

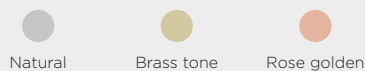
192 kHz fixed

Customisation options

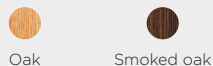
Fabric colours:



Aluminium crown:



Panel:



Please visit your local Bang & Olufsen store to explore further customisation possibilities than the mentioned standard options..

FEATURES

Active Room Compensation

This technology secures a uniform sound experience in selected listening positions/zones, in practice by actively adapting the speaker output to compensate for poor room acoustics.

Beam Width Control

Makes it possible to alter the width of the sound beam between 'narrow', 'wide' and 'omni', optimized respectively for 'sweet spot' listening, 'large area' listening and '360 degree' listening.

Beam Direction Control

A technology that makes it possible to direct the sound beam from the speakers in five different directions..